

13710 Dabney Road, Woodbridge, VA 22191

BELMONT LOGISTICS



DELIVERED!
44,798 SF
AVAILABLE
FOR LEASE
LAST
REMAINING
SPACE!



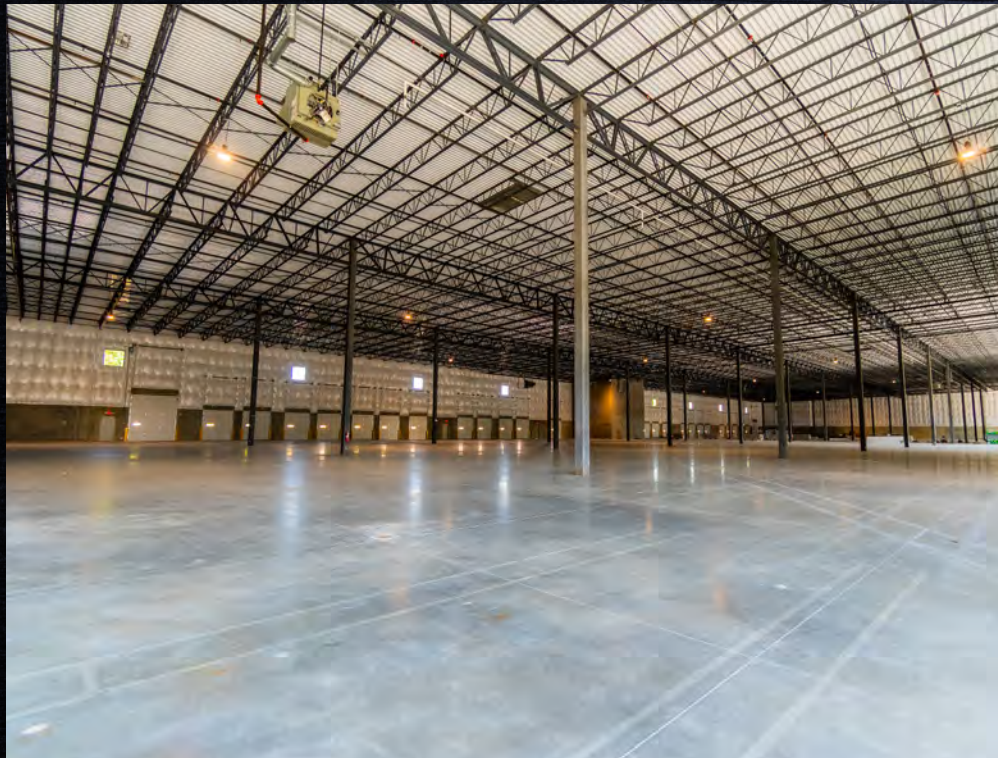
JLL Mid-Atlantic Industrial

John Dettleff
Exec. Managing Director
703.485.8831
john.dettleff@jll.com

Dan Coats
Senior Managing Director
703.891.6410
dan.coats@jll.com

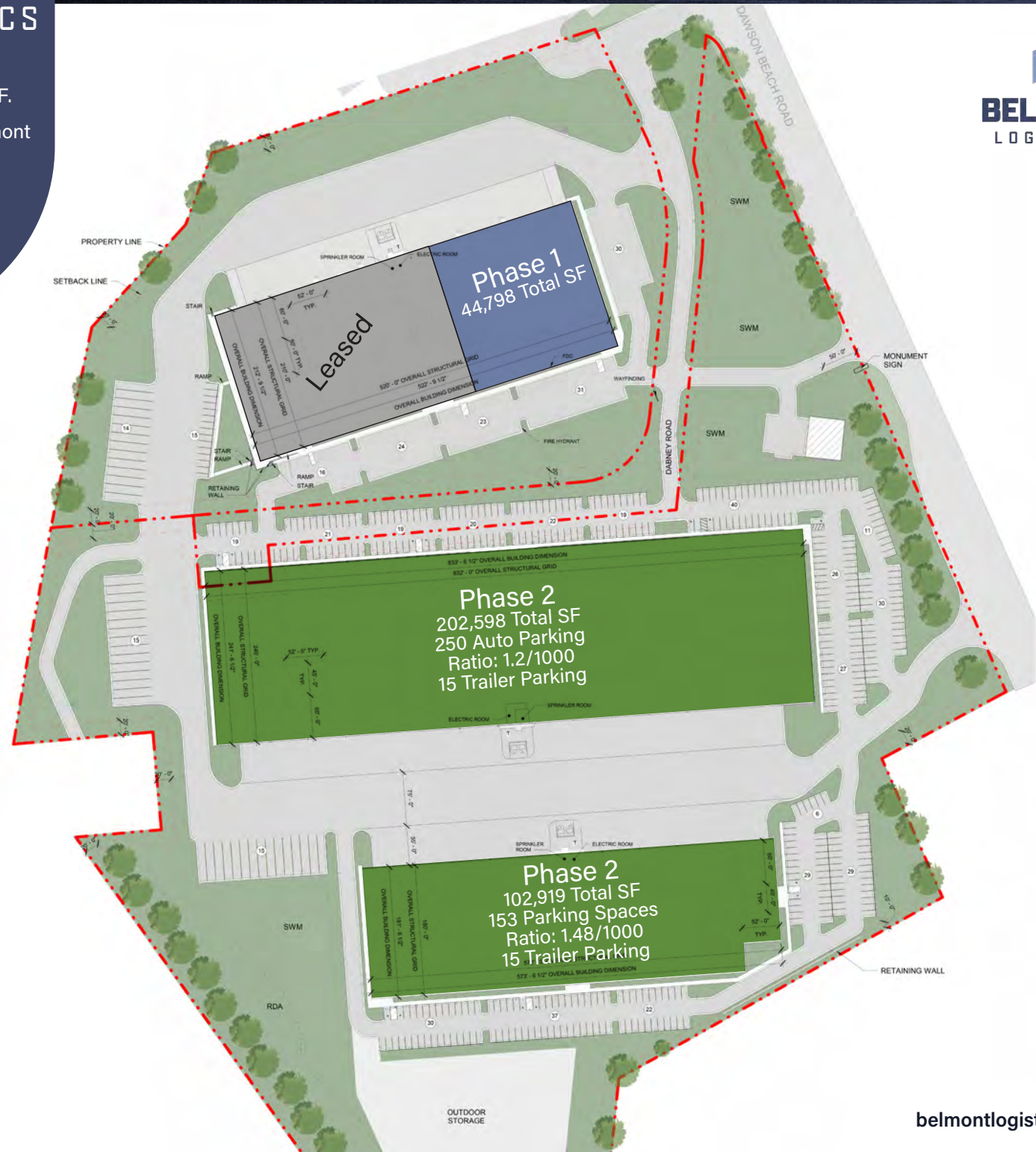
belmontlogisticsdc.com





BELMONT LOGISTICS

is a two-phase, three-building industrial park totaling 416,000 SF. Located 1.5 miles from I-95, Belmont Logistics offers unparalleled connectivity to Northern Virginia and the entire, Metro DC Region.



Floor Plan

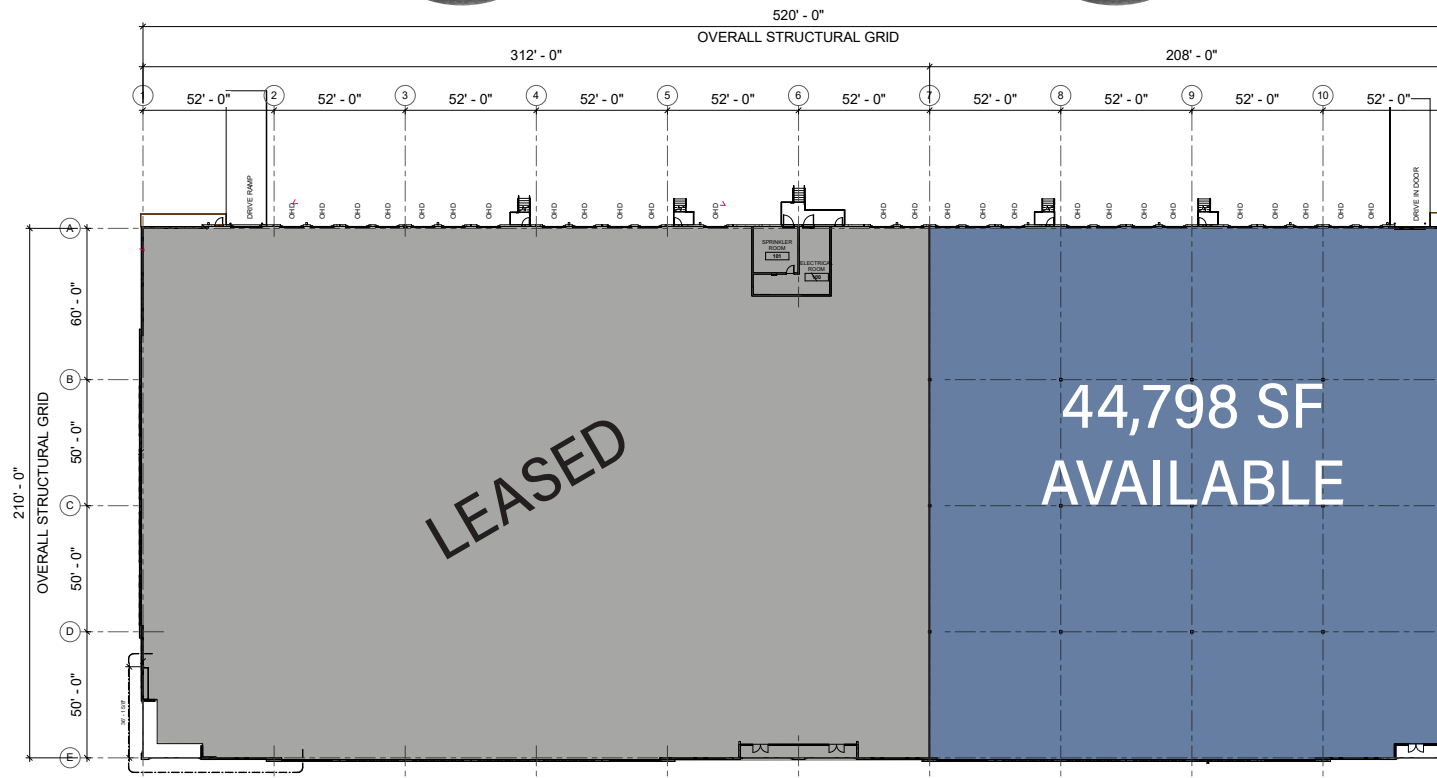


12
dock
positions

4
trailer
parking

210'
building
depth

62
auto
parking



52 x 50
columns

32'
clear
ceiling

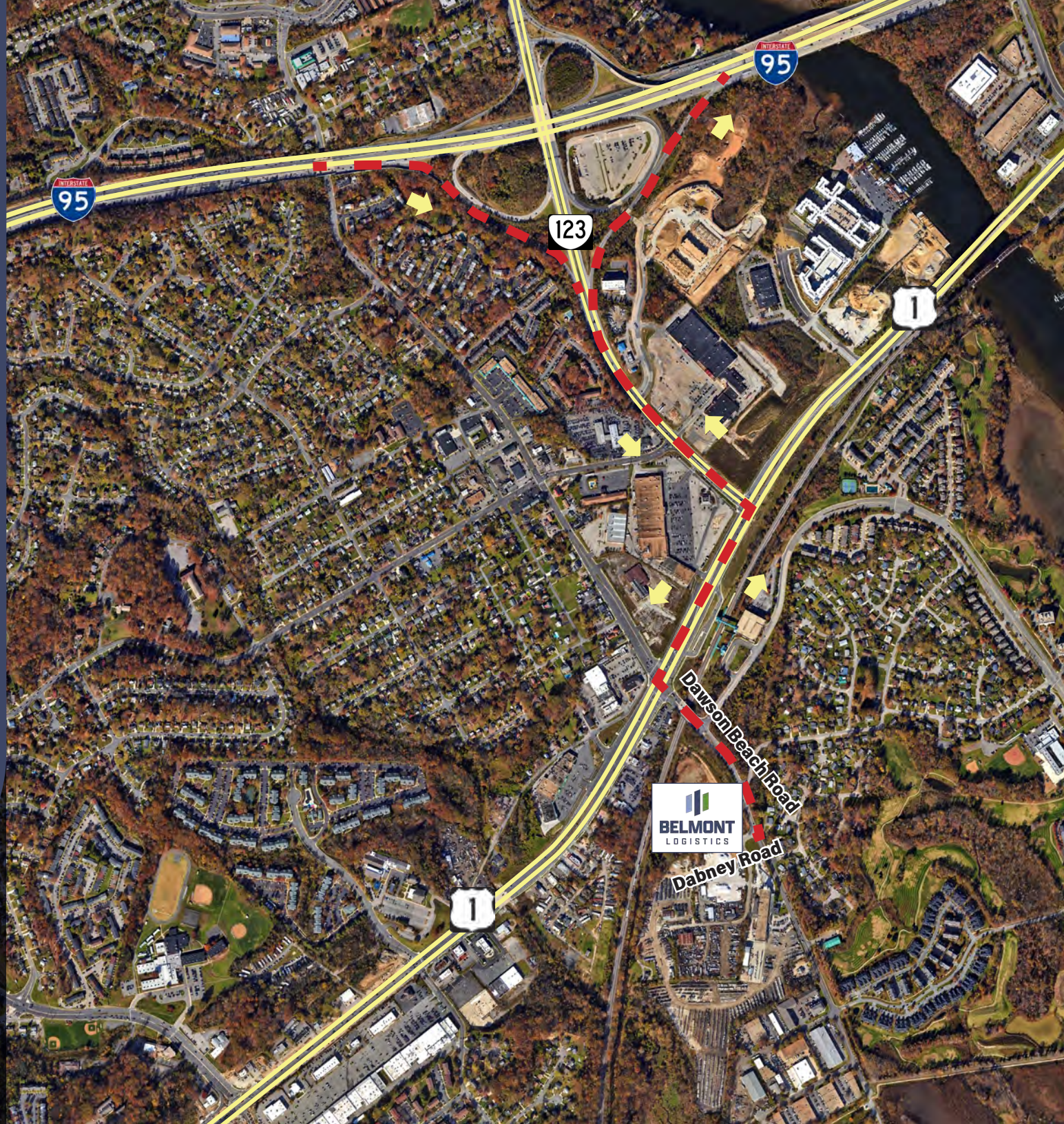


Travel Distance

0.3 miles	Route 1
1.3 miles	Interstate 95
11 miles	Interstate 495
11.3 miles	Fort Belvoir
17 miles	Quantico
69 miles	Potomac Mills

Population

Within 10 miles	551,418
Within 5 miles	182,706
Within 3 miles	69,750





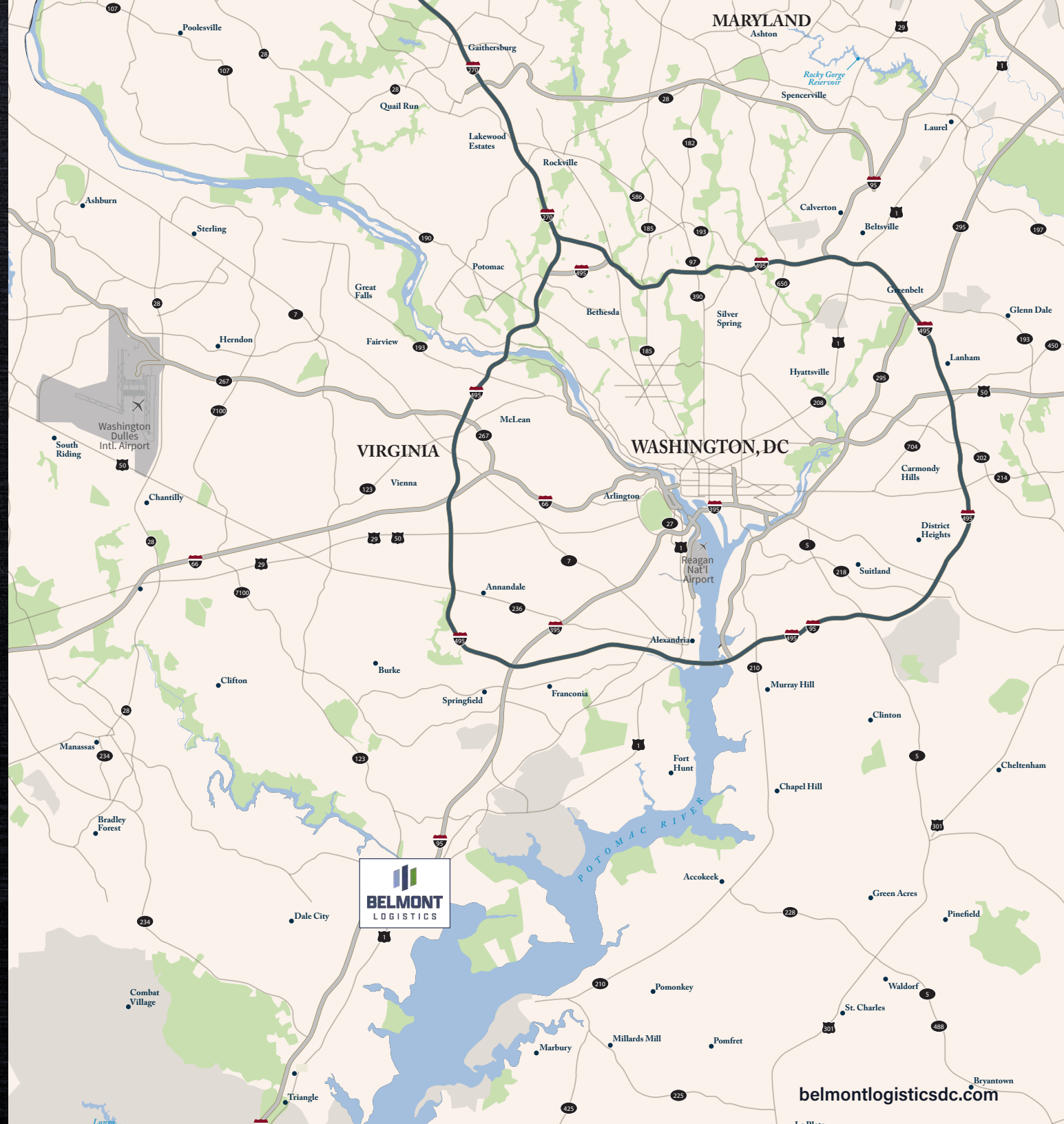
For more information,
please contact:

John Dettleff
Exec. Managing Director
703.485.8831
john.dettleff@jll.com

Dan Coats
Senior Managing Director
703.891.6410
dan.coats@jll.com



Although information has been obtained from sources deemed reliable, neither Owner nor JLL makes any guarantees, warranties or representations, express or implied, as to the completeness or accuracy as to the information contained herein. Any projections, opinions, assumptions or estimates used are for example only. There may be differences between projected and actual results, and those differences may be material. The Property may be withdrawn without notice. Neither Owner nor JLL accepts any liability for any loss or damage suffered by any party resulting from reliance on this information. If the recipient of this information has signed a confidentiality agreement regarding this matter, this information is subject to the terms of that agreement.
©2022. Jones Lang LaSalle IP, Inc. All rights reserved.



belmontlogisticsdc.com